

NOTE: ALL LEADS 9" OUT MIN., STRIPPED .5"

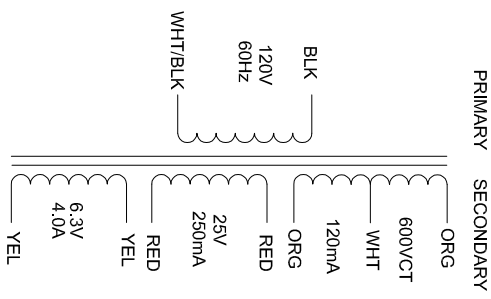
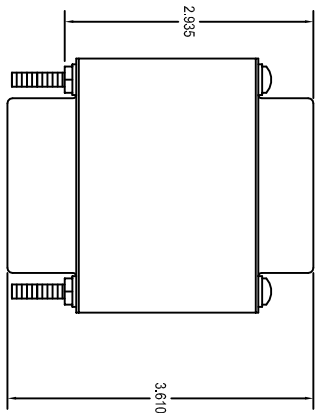
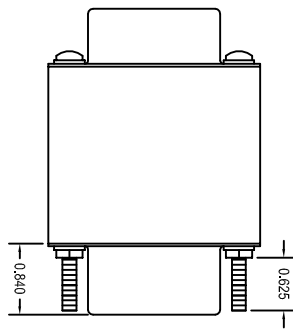
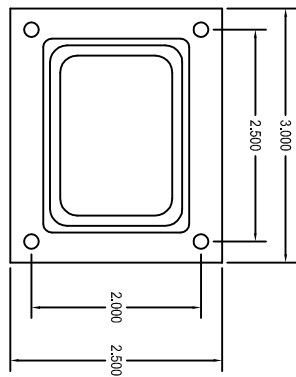
HAMMOND
 MANUFACTURING
290CZ
 E207860
 TYPE: 3AH ED

PRI: BLK - WHT/BLK 120V 60Hz
 OUTPUT: ORG - WHT - ORG 600VCT @ 120mA
 OUTPUT: RED - RED 25V @ 250mA
 OUTPUT: YEL - YEL 6.3V @ 4.0A

MADE IN CANADA
 JS2302

ELECTRICAL DATA		ACCEPTANCE CRITERIA
TESTS	CONDITIONS	
Isx	BLK - WHT/BLK @ 120V 60Hz	500mA (TYP)
NLV	BLK - WHT/BLK @ 120V 60Hz	
	ORG - WHT = WHT - ORG =	310V - 0 - 310V
	RED - RED =	26.1V
	YEL - YEL =	6.4V
DCR	@ 20°C. BLK - WHT/BLK =	1.65 Ω ±20%
	@ 20°C. ORG - ORG =	77.3 Ω ±20%
	@ 20°C. RED - RED =	1.70 Ω ±20%
	@ 20°C. YEL - YEL =	0.028 Ω ±20%
HIPOT	PRIMARY - HV SECONDARY	2500V, 60Hz, 1 SEC
	PRIMARY - CORE	2500V, 60Hz, 1 SEC
	HV SECONDARY - CORE	2500V, 60Hz, 1 SEC
	PRIMARY - SECONDARY	2500V, 60Hz, 1 SEC
	SECONDARY - CORE	600V, 60Hz, 1 SEC
	SECONDARY - SECONDARY	600V, 60Hz, 1 SEC

SIMILAR TO VOX AC15C1



PROPERTY AND COPYRIGHT NOTICE
 THIS DRAWING AND THE INFORMATION IT CONVEYS ARE THE PROPERTY OF HAMMOND MANUFACTURING. IT MAY NOT BE REPRODUCED, TRANSMITTED OR USED IN ANY MANNER WHATSOEVER WITHOUT THE WRITTEN PERMISSION OF HAMMOND MANUFACTURING.

REV	NOTES	BY	DATE	REV	NOTES	BY	DATE

DRAWN C. BAACK	DATE 03/14/17	NUMBER 290CZ
APPROVED	DATE	EDB290CZ

HAMMOND MANUFACTURING ELECTRONIC DIVISION 52 RANKIN PLACE WATERLOO, ONTARIO, N2J 3Z5 PHONE: 519.886.6181 FAX: 519.886.9540
--