

圖號 DRAWING No. :

品名 NAME: Din Spade ITEM No. :

校訂版次 REVISIONS			
版次	記述 DESCRIPTION	DATE	核可

MAXIMUM ELECTRIC CURRENT

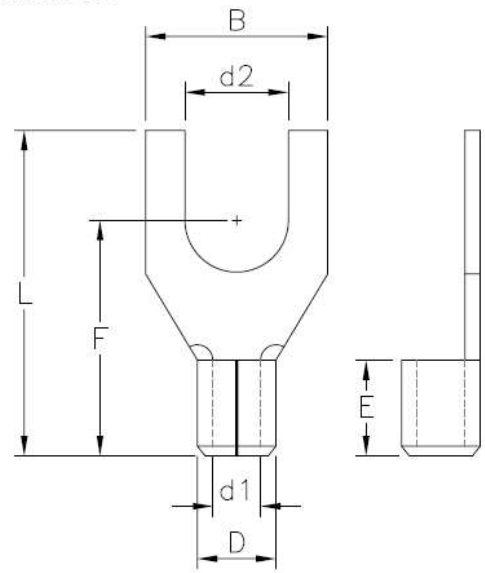
A. W. G	22	20	18	16	14	12	10
MAX AMP	9	12	17	18	30	35	50



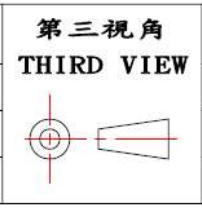
- NOTE: DIN 46234
1. BRAZED SEAM
 2. WIRE RANGE: 22-16 AWG / 0.5-1.5 mm²
 3. WIRE RANGE: 16-14 AWG / 1.5-2.5 mm²
 4. WIRE RANGE: 12-10 AWG / 4-6 mm²
 5. MATERIAL THICKNESS: t
TOLERANCE: ±0.05

WIRE RANGE AWG/mm ²	產品編號 ITEM NO.	d2 ±0.20	B	F ±0.25	L ±1.00	E ±0.10	D ±0.30	d1 ±0.30	t
22-16 AWG 0.5-1.5 mm ²		2.7	6.0	11.0	13.8	5.0	3.5	1.6	0.8
	ST-093/2	3.2	6.0	11.0	13.8				
		3.7	6.0	11.0	13.8				
		4.3	8.0	12.0	15.8				
		5.3	10.0	13.0	17.8				
16-14 AWG 1.5-2.5 mm ²		3.2	6.0	11.0	13.8	5.0	4.1	2.3	0.8
		3.7	6.0	11.0	13.8				
		4.3	8.0	12.0	15.8				
		5.3	10.0	14.0	18.8				
		6.5	11.0	16.0	21.3				
12-10 AWG 4-6 mm ²		4.3	8.0	14.0	18.0	6.0	5.8	3.6	1.0
		5.3	10.0	15.0	20.0				
		6.5	11.0	16.0	21.5				
		8.4	14.0	19.0	26.0				

B	
0-3	+0.00 -0.14
3-6	+0.00 -0.18
6-10	+0.00 -0.22
10-18	+0.00 -0.27
18-30	+0.00 -0.33
30-50	+0.00 -0.36



認可 APPROVALS	
製圖 DRAFT:	TINA
設計 DESIGN:	KEN
核可 CHECKED:	ANDY



MATERIAL
INSULATION: NON
MATERIAL: COPPER
TIN PLATING

單位 UNIT
m/m
比例 SCALE

日期 DATE: 2015. 01. 05